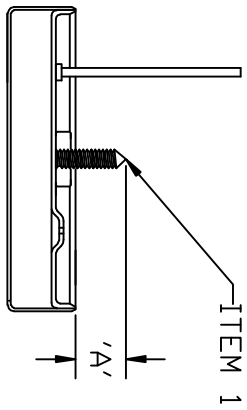
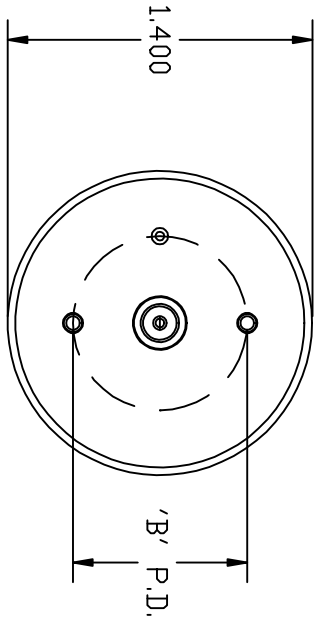


- ASSEMBLE ITEM 1 TO COVER AS INDICATED BY CAPACITOR DISCHARGE WELDING.
- ASSEMBLY MUST WITHSTAND MINIMUM 50# PULL TEST WITHOUT FAILURE OR DISTORTION.



SUFFIX	ITEM 1 DESCRIPTION	'A'	'B'
SM	0.312 X 2-56 CDA752 STUD	0.222	0.800
SM01	0.375 X 2-56 CDA752 STUD	0.285	0.800
SM02	0.500 X 2-56 CDA752 STUD	0.410	0.800
SM03	0.250 X 2-56 CDA752 STUD	0.160	0.800

REV.	DATE	DESCRIPTION	COMMENTS
1	1/17/08	E	CHANGED PER ECO DRAFT
2	2/12/07	D	CHANGED PER ECO 07-004
3	1/23/07	C	ADDED CHART
4	5-22-08	F	MODIFIED DIMENSION "A" IN TABLE

DIMENSIONS ARE IN INCHES
 MATERIAL:
 EVANS CAPACITOR COMPANY
 72 BOYD AVE.
 EAST PROVIDENCE, RI

THQ1/3/5 STUD MOUNTING

SCALE: A

DATE: 10/24/05

DWG NO.: THQ-101

REV: F

ECO: 2005

SHEET 1 OF 1